



Community Confidentiality Candor Commitment

ESSCR Questionnaire and NATF Cyber Security Criteria Revisions

March 19, 2021


Open Distribution

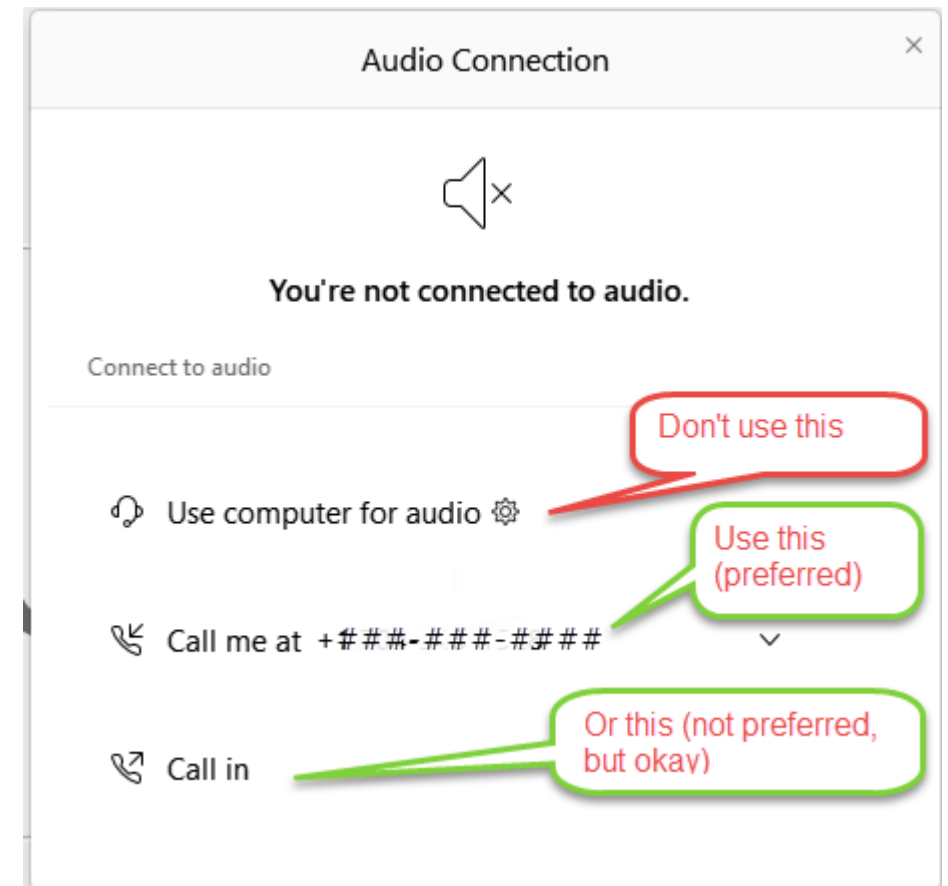
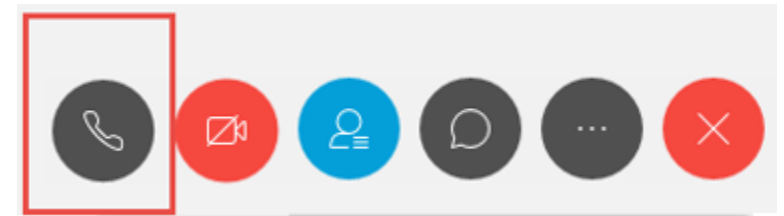
Copyright © 2021 North American Transmission Forum. Not for sale or commercial use. All rights reserved.

No Representation or Warranty

The NATF makes no representation or warranty, either express or implied, as to the accuracy or completeness of the information contained in this document.

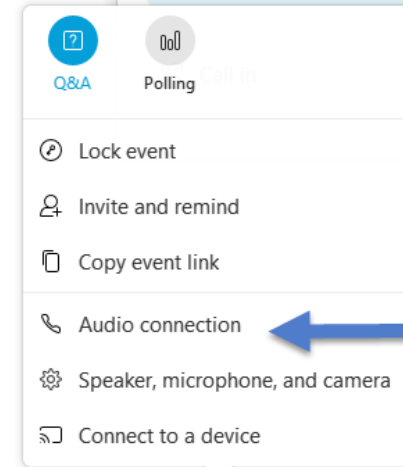
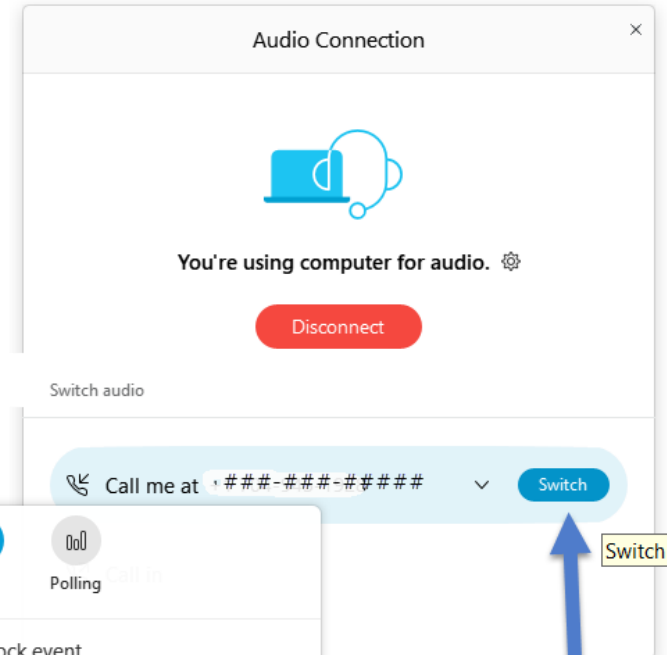
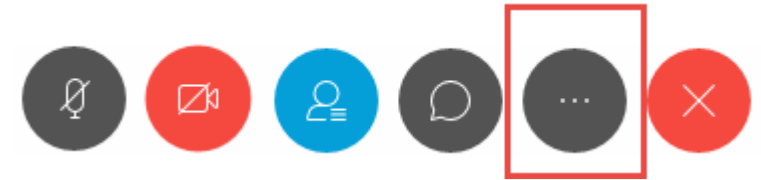
Webex Audio Connection

- Select  to connect to audio
 - Select the “Call me at...” option
 - Don’t select “Use computer for audio” unless you have a headset and are familiar with using a VOIP connection
 - Don’t select “Call in” unless “Call me at...” does not work



- If you connect to audio the wrong way

- Select the “More Options” menu
- Select “Audio connection”
- Select “Disconnect” or select “Switch” next to “Call me at...”



Webinar is open to industry

Invitation was widely distributed

Adhere to Anti-Trust Laws


- Supplier Assessment Model is built on inclusivity and risk mitigation

Agenda Overview


- Opening Remarks
- Process Overview and Teams
- Supplier's Perspective
- Entities use of the Questionnaire and Criteria
- Industry Inputs and V2.0 Revision Redlines
- Use of Solution Providers Drives Consistency



Community Confidentiality Candor Commitment




Mikhail Falkovich
ConEd



Laura Schepis
EEI



James Chuber
Duke



Shannon Hammett
Southern Co



Jamie Carnes
NATF

Today's Presenters - Industry



Community

Confidentiality

Candor

Commitment



Frank Harrill

SEL Inc.



Jon Terrell

Hitachi-ABB

Today's Supplier Presenters



Community

Confidentiality

Candor

Commitment



Tobias Whitney

Fortress A2V



Gonda Lamberink

UL



Alex Golbin

KY3P

Today's Solution Provider Presenters

Opening Remarks

Tom Galloway, President and CEO



Tom Galloway

NATF President and CEO

Opening Remarks

Vision

- Mitigate and manage Cybersecurity Supply Chain Risk
- Solutions and Processes focused on the Electric Sector
- Open and inclusive process
- Industry participant feedback is crucial to our success
- Alignment between industry, supplier, and government



Mikhail Falkovich

ConEd

Opening Remarks: ESCC Role in Supply Chain Efforts

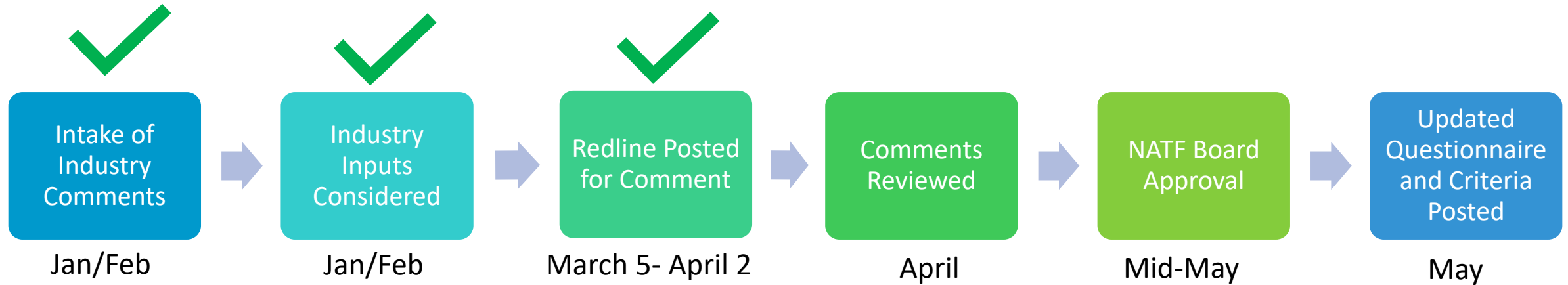
- ESCC-EGCC meetings provide a forum for DOE and other government partners to convey priorities
- Identified in “consultation” role in EO 13920
- ESCC Co-Chairs proposed forming a Supply Chain Working Group at 3/16/21 meeting
- Scoping underway with the ESCC Strategic Action Advisers group
 - Avoid duplication, increase coordination
 - Amplify consensus voice
 - Anticipate new directions emanating from Biden Administration



Laura Schepis

EEI

Process Overview



Provide input to supplychain@natf.net

Resources:

- [Revision Process for the ESSCR Questionnaire and NATF Criteria for Suppliers](#)
- October 2020 Webinar – [NATF Criteria and Questionnaire Overview Use and Revision](#)

Team Members

- Review team members
- Advisory team

Advisory Team	
Member	Company
Zohaib Hasan	ConEd
Laura Schepis	EEl/ESCC
Tony Eddleman	NATF Steering Team
Rob Koziy	OSI
Victor Calderon	SCE

Review Team Member	Company
Jeffrey Sweet	AEP, NATF Steering Team
Chuck Abell	Ameren, NATF Steering Team
Jack Cashin	APPA
Eric Levenstein	ConEd/DOE Working Group
Mikhail Falkovich	ConEd/DOE Working Group
James Chuber	Duke, NATF Steering Team
Mary Nettleton	Exelon
Betsy Soehren-Jones	Exelon, NATF Steering Team
Tobias Whitney	Fortress/A2V
Jon Terrell	Hitachi-ABB
Jamie Carnes	NATF
Jose Flores	NATF
Ken Keels	NATF
Scott Webb	Network and Security Technologies
Tony Eddleman	NPPD, NATF Steering Team
Rob Koziy	OSI
Steve McElwee	PJM, NATF Steering Team
Carl Phillips	PSEG
Jake Stricker	PWC
Roger Blakely	Santee Cooper
Frank Harrill	SEL
Shannon Hammett	Southern Co, NATF Steering Team
Barry Jones	WAPA

Industry Organization Team Members

Organizations, Forums and Working Groups

- AGA
- CEA
- EEI
- LPPC
- APPA
- TAPS
- NAGF
- NAESB
- ConEd Working Group
- NERC CCC/RSTC/SCWG
- NRECA

Suppliers

- Hitachi ABB Power Grids
- GE Grid Software Solutions
- OSI
- Siemens Industry, Inc.
- Schneider Electric
- Schweitzer Engineering

Third-Party Assessors

- Ernst & Young
- KPMG LLP
- PWC
- Deloitte

Organizations providing support products or services

- EPRI
- Fortress/A2V
- KY3P
- UL

Supplier's Perspective – Use of Questionnaire and Criteria

Drive consistency of information obtained from suppliers to perform risk assessment

- Supplier Security Posture
- Products/Services

Optimize supplier ability to be prepared with responses

- Request responses from suppliers without making modifications
- Request any additional or modified questions separately

Entities use of the Questionnaire and Criteria

Questionnaire and Criteria focus on security

- Criteria maps to NERC Supply Chain standards
- Compliance should be a by-product of security

Use what works for your company

- Size
- Resources
- Risk

Depth

- Criteria
- Questionnaire
- Solution Providers

Entities use of the Questionnaire and Criteria

Use what you need

- May use in stages, depending upon your risk assessment process
- Identify risks
 - May be based on supplier hygiene or product
 - Formatted Questionnaire suggests potential optional responses to consider based on qualifiers
- Determine if risks can be mitigated
 - By supplier or purchaser
- Consider net risks (post any mitigation) in purchase decision

If the information you need is different from the Questionnaire or Criteria

- Report differences to NATF
 - Missing
 - Not needed by most entities
- Drive consistency

Industry Input

- Publicly announced
 - NATF October 2020 webinar
 - NATF Public site
 - LinkedIn Posting
 - Distributed through the Industry Organizations Team members' communications
- Over 180 individual input items received
- Sources: team members, suppliers, WEF, NERC, E-ISAC
- At least one comment for each section – comprehensive
- Feedback to those that provided input

Input Categories	# Inputs	Summary of Consideration
Mapping to Criteria	45	All could be mapped but not intent
Formatting	29	Included where it made sense
Workbook Clarity	47	Added clarifying text in several areas
General questions	61	Industry knowledge and understanding. Added clarity as needed.

V2.0 Revision Redlines

ESSCR Questionnaire – V2.0 DRAFT Redline Revision (Formatted)

Corrected typos
Improved conditional formatting
Removed duplicate questions

Minor formatting changes
Added clarifying text

Energy Subsector Supply Chain Risk Questionnaire - Formatted
Revision Redlines
Version: 2.0 DRAFT
Approved: 03/05/2021
Document ID: 1394

Open Distribution for Supply Chain Materials
Copyright © 2021 North American Transmission Forum ("NATF"). All rights reserved.

The NATF permits the use of the content contained herein ("Content") without modification; however, any such use must include this notice and reference the associated NATF document name & version number. The Content is provided on an "as is" basis. The NATF and contributors to the development of this document ("Contributors") makes no and hereby disclaims all representations or warranties (express or implied) relating to the Content. The NATF and Contributors shall not be liable for any damages arising directly or indirectly from the Content or use thereof. By using the Content, you hereby agree to defend, indemnify, and hold the NATF and Contributors harmless from and against all claims arising from such use.

Version History:

Date	Version	Revision Notes
5/7/2020	1	Initial version posted
9/21/2020	1.1	Corrected cell name for reference in G113 and G114
3/5/2021	2.0 Draft	Corrected various typos. Added content to General Information section. Added definition reference for CEII Added check box and option for BCSI data Added additional content and conditional formatting to Guidance section. All font in column G for guidance changed to blue Removed duplicate question RISK-28 Changed "another provider" to "another supplier" in THRD-09 Added new question WFM-01.1 Removed duplicate question EIR-11 Added clarifying text to EIR-12 Removed duplicate question RISK-28 Formatted cells to allow for text entry for following questions: COMP-06, COMP-07, COMP-08, IAM-01, IAM-21, IAM-22, IAM-28, CHNG-07, CSTA-10, CSTA-13, CSTA-19, DATA-21, DATA-23, MOBL-02, and AC-1 <i>Changes are indicated by red font</i>

Cyber Security Criteria for Suppliers – V2.0 Redline Revision

Added clarifying content
Moved 3 OIs to Criteria

NATF Cyber Security Criteria for Suppliers
Revision Redlines
Version 2.0 DRAFT
Approved: 03/05/2021
Document ID: 1355

Open Distribution for Supply Chain Materials
Copyright © 2021 North American Transmission Forum ("NATF"). All rights reserved.

The NATF permits the use of the content contained herein ("Content"), without modification; however, any such use must include this notice and reference the associated NATF document name & version number. The Content is provided on an "as is" basis. The NATF makes no and hereby disclaims all representations or warranties (express or implied) relating to the Content. The NATF shall not be liable for any damages arising directly or indirectly from the Content or use thereof. By using the Content, you hereby agree to defend, indemnify, and hold the NATF harmless from and against all claims arising from such use.

Version History:

Date	Version	Notes
7/30/2019	0	Initial version
1/31/2020	1.0	Refined Version 0 Criteria - Contributions from the NATF Proof of Concept Team and Industry Organizations
3/20/2020	1.1	Refined copyright to allow for open use with conditions
6/19/2020	1.2	Added mapping to UL Supplier Cyber Trust Level; removed incorrect reference in Organizational Information header
3/5/2021	2.0 Draft	Added content to General Information section Add clarifying text to Criteria #52 Moved OI #16, 17, 18 to Supplier Criteria #61,62,63 <i>Changes are indicated by red font</i>

Use of Solution Providers Drives Consistency

*Alex Golbin – KY3P
Gonda Lamberink – UL
Tobias Whitney – A2V*

Solution Providers

- use and build upon the NATF Questionnaire and Criteria
- will receive the modifications to Questionnaire and Criteria
- offer additional services such as on-going monitoring

Additional Guidance coming

- Look for guidance from suppliers/solution providers

NATF Contact Information

supplychain@natf.net

vagnew@natf.net

jcarnes@natf.net



Community

Confidentiality

Candor

Commitment

Thank you for attending!

Open Questions



Possible Assessment Process with EO Criteria

